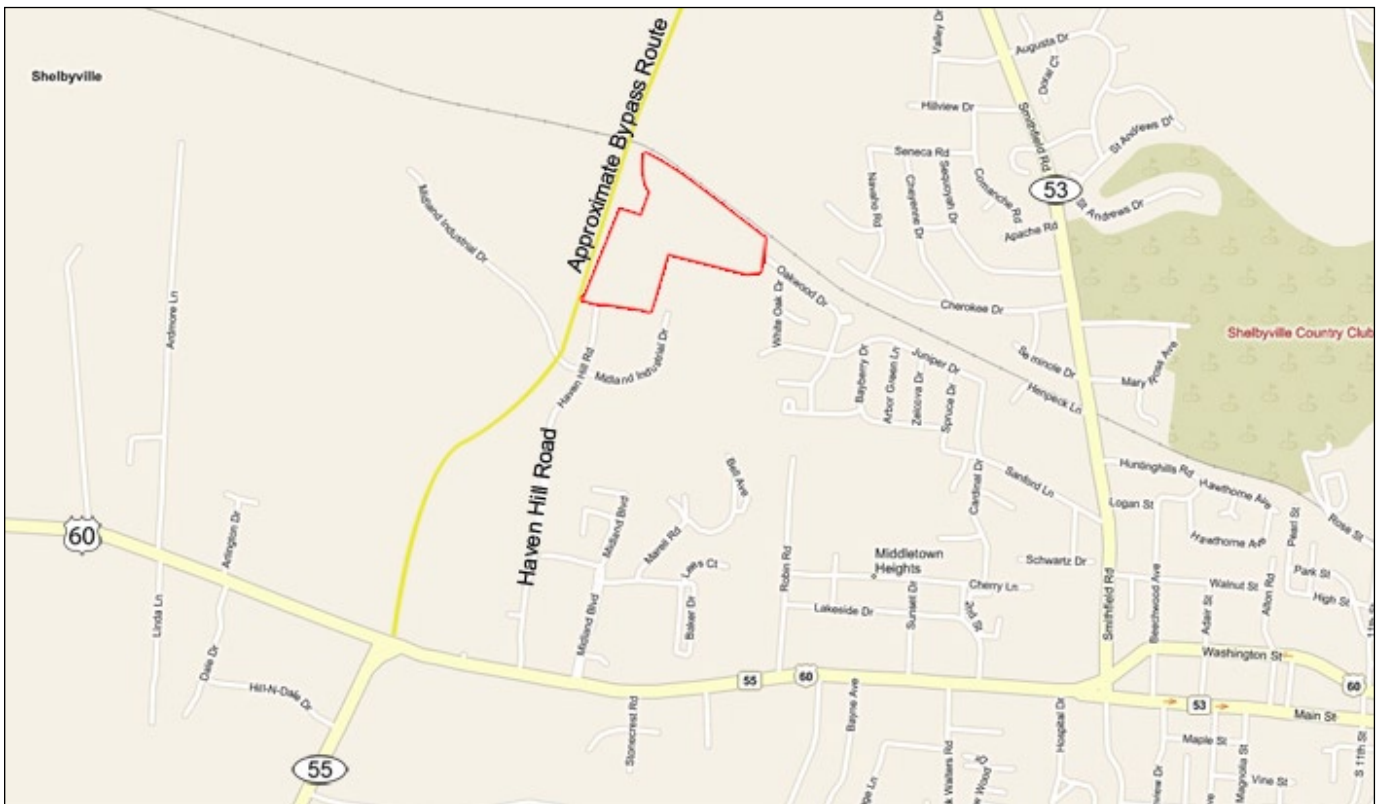


INDUSTRIAL LAND FOR SALE

24.77 ACRES

This is an excellent site in Shelby County for end-user or industrial development. Soon to enjoy superior visibility alongside the new Bypass route.

- Convenient location in Midland Trail Industrial Park
- Immediately adjacent to new Shelbyville NW Bypass
- Potential rail access
- I-1 Zoning



MIDLAND TRAIL INDUSTRIAL PARK
HAVEN HILL ROAD • SHELBYVILLE, KY 40065

HORIZON

COMMERCIAL REALTY

502 429 0090 ph • 502 253 9156 fx

www.horizoninv.com

13125 Eastpoint Park Boulevard, Suite 102 • Louisville, KY 40223